

Do not turn over or open this paper until
told to do so

CEA

Common Entrance Assessment

Practice Paper 0

Sample Questions

Information for candidates

This paper provides some samples of the type of questions that appear in Practice Papers 1 to 16.

It is not a complete question paper and should not be treated as a mock exam. The time required to complete this sample paper will be less than the time required to complete Practice Papers 1 to 16.

There are 34 questions in this booklet.

NOT TO BE FILLED IN BY THE PUPIL

MATHEMATICS

Page	Marks	Score	Check	
1	4			
2	2			
3	2			
7	3			
8	3			
9	2			
12	3			
13	5			
Total	24			

NOT TO BE FILLED IN BY THE PUPIL

ENGLISH

Page	Marks	Score	Check	
5	4			
6	4			
10	4			
11	4			
Total	16			
TOTAL SCORE				

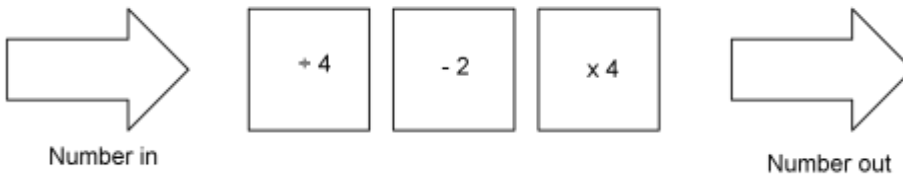


1. Write the numbers below as decimals. Write your answers in the spaces provided.

Three hundred and sixteen and one fifth _____

Five quarters _____

Look at the function machine below.



2. What number does the function machine give when the **Number in** is 24? Write your answer in the space below.

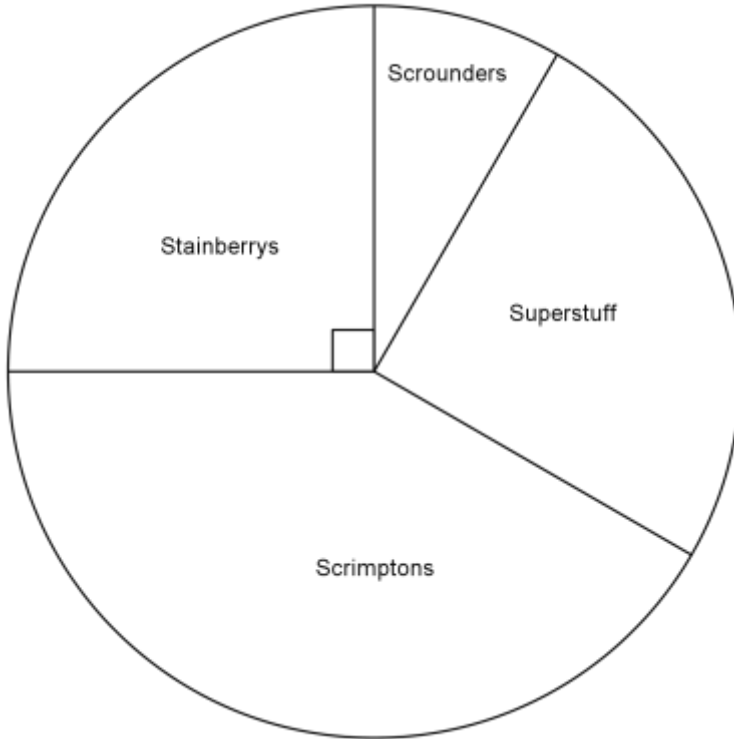
3. What was the **Number in** if the **Number out** is 24? Write your answer in the space below.

-
4. The cost of a shirt goes up by 10%. If it originally cost £32, how much does it cost after the price has increased? Write your answer in the space below.

Do not write in
this column

(4)

5. Katie did a survey of the 32 pupils in her class. She asked the question "Which supermarket does your family usually go to?" The results are shown in the pie chart below.



The same number of pupils said **Stainberrys** and **Superstuff**.

Five pupils said **Scrounders**.

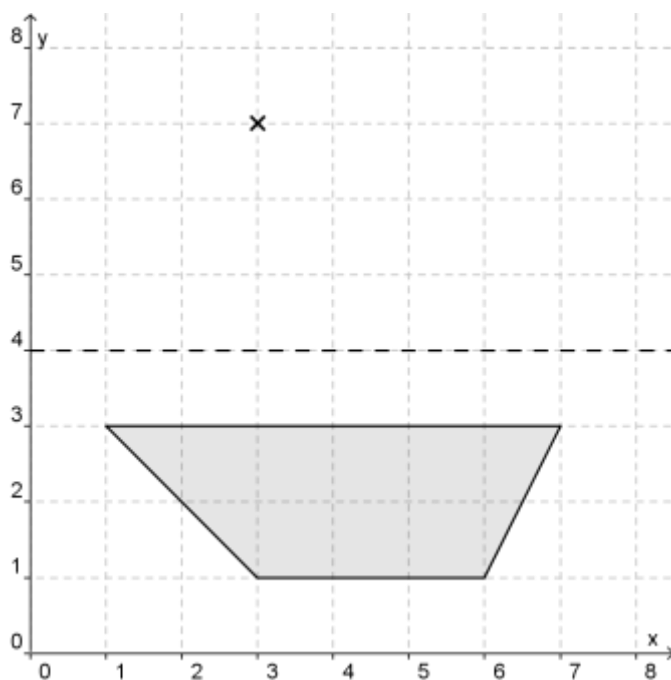
How many pupils said **Scrimptons**? Write your answer in the space below.

6. Look at the statements below. Tick either true or false for each statement.

	True	False
$\frac{5}{8}$ of a full turn is a reflex angle	<input type="checkbox"/>	<input type="checkbox"/>
A full turn is 180°	<input type="checkbox"/>	<input type="checkbox"/>
A quarter turn is 90°	<input type="checkbox"/>	<input type="checkbox"/>
$\frac{3}{4}$ of a half turn is an acute angle	<input type="checkbox"/>	<input type="checkbox"/>

Do not write in this column	
(2)	

7. Look at the diagram below. There is a trapezium and a mirror line.



The trapezium is reflected in the mirror line to give a new trapezium. Find the coordinates of the vertices of the new trapezium. One of the vertices has been done for you. Write your answers in the spaces below.

(3, 7), (_____ , _____), (_____ , _____), (_____ , _____)

8. Four rally drivers are timed racing around a short circuit. Here are their times in seconds:

Lawrence	56
Simone	44
Lucette	51
Peter	49

What is the mean (average) of these scores? Write your answer in the space below.

Do not write in this column	
	(2)

Belfast Zoo

Belfast Zoo is one of the top visitor attractions in Northern Ireland, receiving more than 300,000 visitors a year. Located in north Belfast, the zoos 55 acre site is home to more than 1,200 animals and 140 species.

Line 1
Line 2
Line 3
Line 4

The majority of the animals in Belfast Zoo are in danger in their natural habitat. The zoo carries out important conservation work and takes part in over 90 international breeding programmes, which help to ensure the survival of many species under threat.

Line 5
Line 6
Line 7
Line 8
Line 9

Belfast Zoo is owned by Belfast City Council. The council spends £1.5 million every year on running and promoting the zoo.

Line 10
Line 11
Line 12

The story of Belfast Zoo began with the city’s public transport system, At the beginning of the 20th century, passengers from Belfast were transported to the villages of Whitewell and Glengormley by horse-drawn and steam trams.

Line 13
Line 14
Line 15
Line 16
Line 17

In 1911, the tram line was taken over by Belfast City Council. The council decided to build a miniture railway, playground, and pleasure gardens at the end of the line to encourage people to use the tram. The area was named Bellevue Gardens, meaning ‘pretty view’. At the centre was the Grand Floral Staircase, a series of steps too reach the top of the hillside. Who could resist such a beautiful attraction, just outside the city.

Line 18
Line 19
Line 20
Line 21
Line 22
Line 23
Line 24
Line 25

During the 1920s and 1930s, the gardens were a popular destination for day trips. In 1933, the council decided to put a small zoo on the site. Then, in 1934, 12 acres on either side of the staircase were laid out as Bellevue Zoo. It took 150 men to build the site and the steps can still be seen from Antrim Road today. It cost £10,000 to build and almost 300,000 people visited the zoo in its first year. The tramlines were shut down many decades ago, but the zoo remains as popular as ever.

Line 26
Line 27
Line 28
Line 29
Line 30
Line 31
Line 32
Line 33
Line 34

Do not write in this column	

13. A question mark is needed instead of a full stop in one line of the article. Tick the number of the line to show where the question mark is needed.

- Line 9
- Line 17
- Line 25
- Line 33

14. According to the article, are the following statements true or false? Tick one box for each statement.

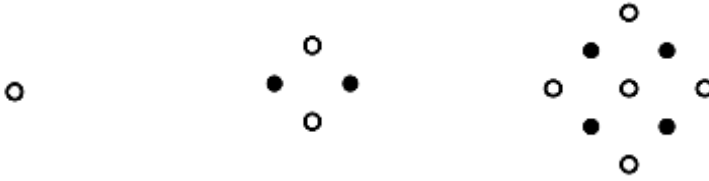
- | | True | False |
|--|--------------------------|--------------------------|
| Most of the zoo's animals are endangered species | <input type="checkbox"/> | <input type="checkbox"/> |
| The Grand Floral Staircase takes you to the visitors' centre | <input type="checkbox"/> | <input type="checkbox"/> |
| The tram still takes you to the zoo | <input type="checkbox"/> | <input type="checkbox"/> |
| The zoo was not very popular when it was first opened | <input type="checkbox"/> | <input type="checkbox"/> |

15. What is the meaning of the word '**habitat**' as used in Line 6 of the passage?

- Country
- Environment
- Planet Earth
- Nest

Do not write in this column	
(4)	

16. Tanya is making patterns from black beads and white beads. Look at her first four patterns below.



Pattern 1

Pattern 2

Pattern 3

In Pattern 1, there is 1 white bead.

In Pattern 2, there are 2 white beads and 2 black beads.

In Pattern 3, there are 5 white beads and 4 black beads.

How many beads will be used **in total** in Pattern 5? Write your answer in the space below.

17. My mum has 24 pairs of shoes. At the moment she can only find 18 pairs. What percentage of her shoes **has she lost**? Write your answer in the space below.

18. Look at the multiplication below

$$18 \times 77 = 1386$$

Use this multiplication to help you calculate the following:

$1.8 \times 77 =$

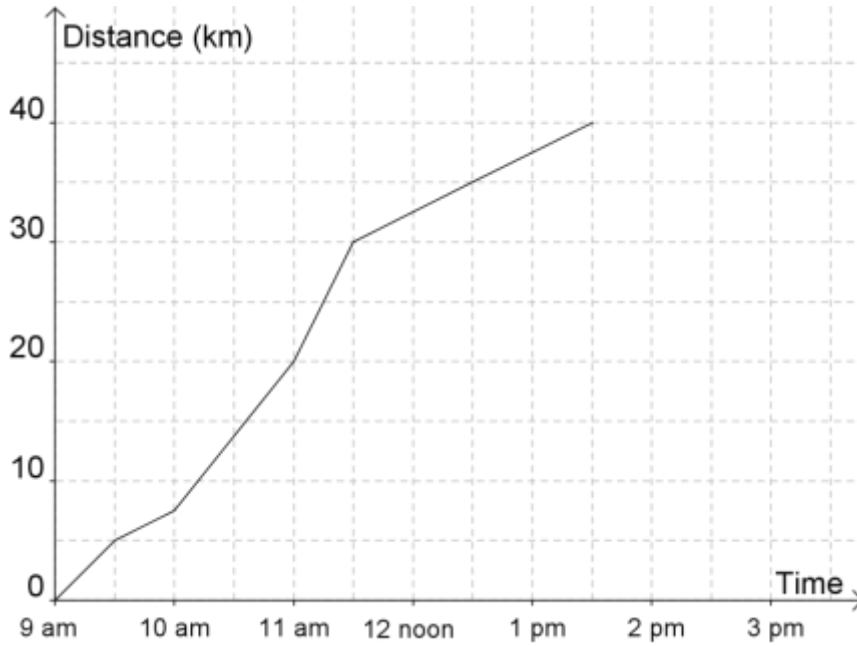
$9 \times 77 =$

$1386 \div 18 =$

Do not write in this column

(3)

Majella runs the Belfast Marathon. The graph below shows her distance from the start line at certain times throughout the race.



19. What time did the marathon start? Write your answer in the space below.

20. How far had Majella run by 11:00 am? Write your answer in the space below.

_____ km

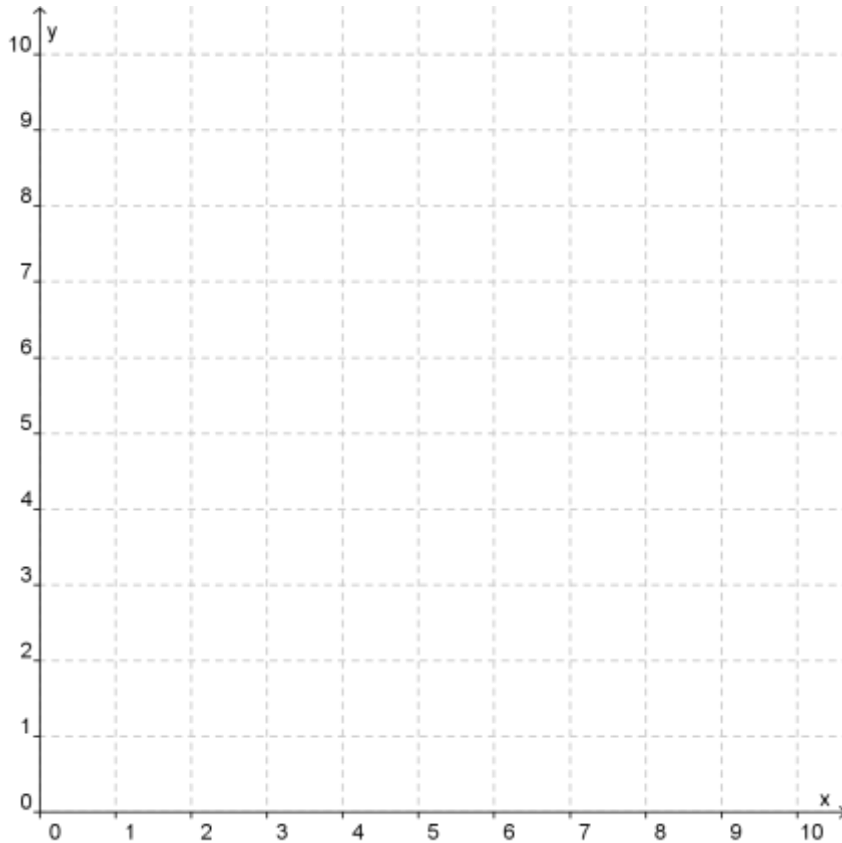
21. The marathon is 40 km long. At what time did Majella finish the race? Write your answer in the space below.

Do not write in this column	
(3)	

Do not write in this column

22. In this question, you **may** use the grid below to plot the following points.

- a. (10, 9), (6, 9), (6, 5) and (10, 5)
- b. (8, 4), (7, 2), (8, 0) and (9, 2)
- c. (4, 1), (4, 9), (3, 7) and (3, 1)



Now complete the following statements using one of these words:

square, rectangle, rhombus, trapezium, kite

The first one has been done for you.

The points (10, 9), (6, 9), (6, 5) and (10, 5) join to make a **square**.

The points (8, 4), (7, 2), (8, 0) and (9, 2) join to make a _____.

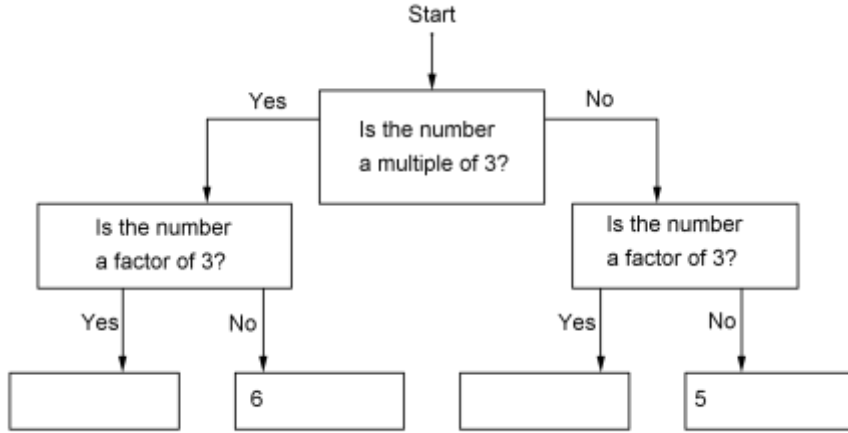
The points (4, 1), (4, 9), (3, 7) and (3, 1) join to make a _____.

(2)

27. Look at the six numbers below.

1 2 3 4 5 6

Now look at this decision tree.



Using the decision tree, put all of the numbers into the correct boxes on the bottom line. Two of the numbers have been done for you.

28. Look at the calculations below. Fill in the spaces to complete the calculations.

a. $74 \div 100 = \underline{\hspace{2cm}}$

b. $3.95 \times \underline{\hspace{2cm}} = 39.5$

29. Look at the numbers below. In which number does the 6 stand for **6 tenths**? Tick one box below.

206.32

219.6

467.5

209.96

Do not write in this column

--	--

--	--

--	--

--	--

--	--

	(3)
--	-----

